



MUSKOKA ALGONQUIN
HEALTHCARE



South Muskoka
Hospital Foundation



Leonard Lake Association Annual General Meeting

July 22, 2023

Alasdair Smith, Vice President,
Corporate Services & CFO
Muskoka Algonquin Healthcare

Leah Walker, Executive Director
South Muskoka Hospital Foundation

Services from A to Z



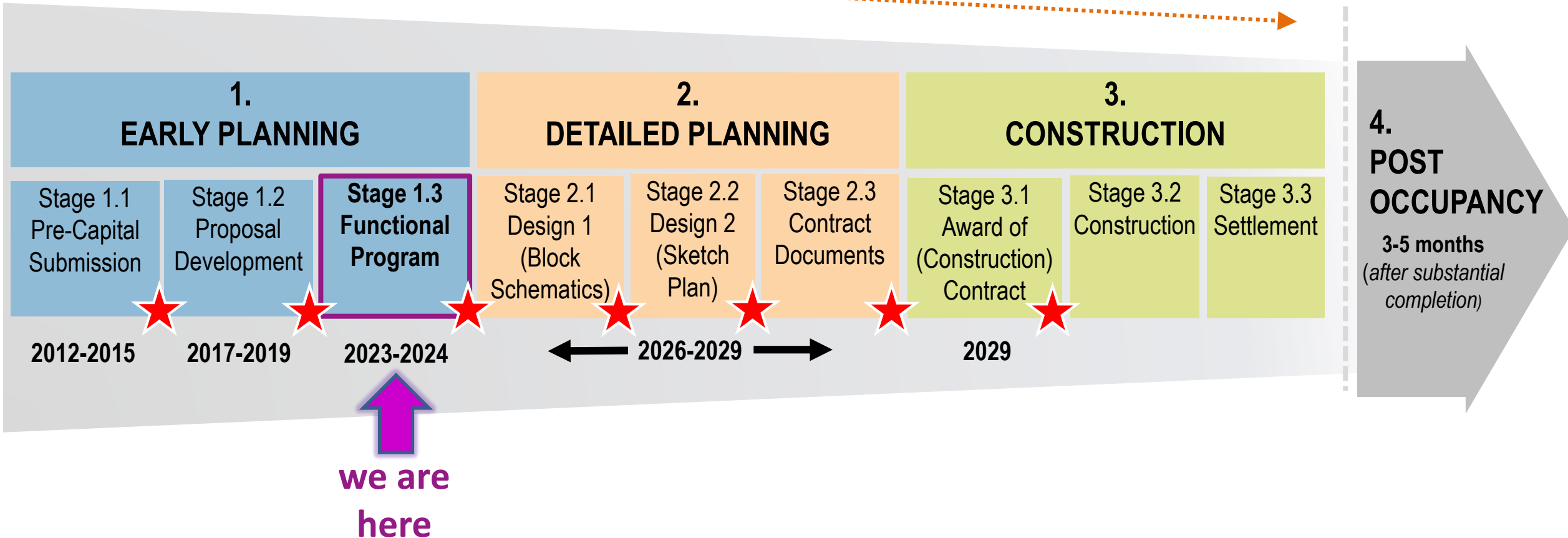
- 24-Hour Emergency Dept.
- Activation Therapy
- Bone Density
- Cardiorespiratory
- Chemotherapy & Infusion Clinic
(part of a regional program)
- Clinical Nutrition
- Complex Continuing Care
(part of a regional program)
- Diabetes Education Program
- Diagnostic Imaging – X-Ray, Ultrasound, CT
- Dialysis
(part of a regional program)
- Discharge Planning
- District Stroke Centre
- Echocardiography
- Fracture Clinic
- Health Records
- Indigenous Patient Navigator
- Intensive Care
- Laboratory Services
- Mammography/OBSP
- Nuclear Medicine
- Obstetrics
- Occupational Therapy
- Ophthalmology (cataracts)
- Palliative Care
- Pharmacy
- Physiotherapy
- Social Work
- Speech Language Therapy
- Spiritual Care
- Seniors Assessment & Support Outreach Team
- Surgical Services: General, Gynaecological, Ear Nose Throat, Plastics, Orthopedics
- Telemedicine (OTN)
- Urology

Ministry Approach to Capital Planning



★ Denotes Government approval required through the stages

COMMUNICATION & STAKEHOLDER ENGAGEMENT



What Happens in Stage 1.3?



Create a Functional Program



USER GROUP CONSULTATIONS



WORKLOAD / VOLUME DATA

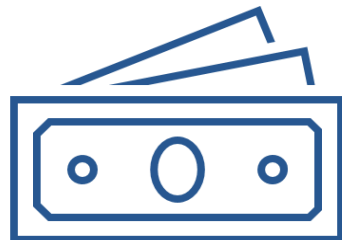


PROGRAM VISION & FUTURE SERVICE DELIVERY MODEL

Engage Staff Patients and Community



Develop a Financing Plan



Site Selection for Bracebridge



Selecting New Land in Bracebridge



South Muskoka Memorial Hospital

- Existing property is land locked in a residential neighbourhood
- Hospital land size is a constraint (11 acres)

What We've Heard About Site Selection



Based on our engagement, several overarching themes have emerged:

Proximity to Highway 11 is key;
Avoid travel through congested roads

Access to public transit to support low-to-moderate-income residents

Availability of municipal servicing

Understanding archaeological potential is important

Cyclist/pedestrian access; proximity to downtown Bracebridge

Impact on environment & sensitive lands; protect natural landscapes

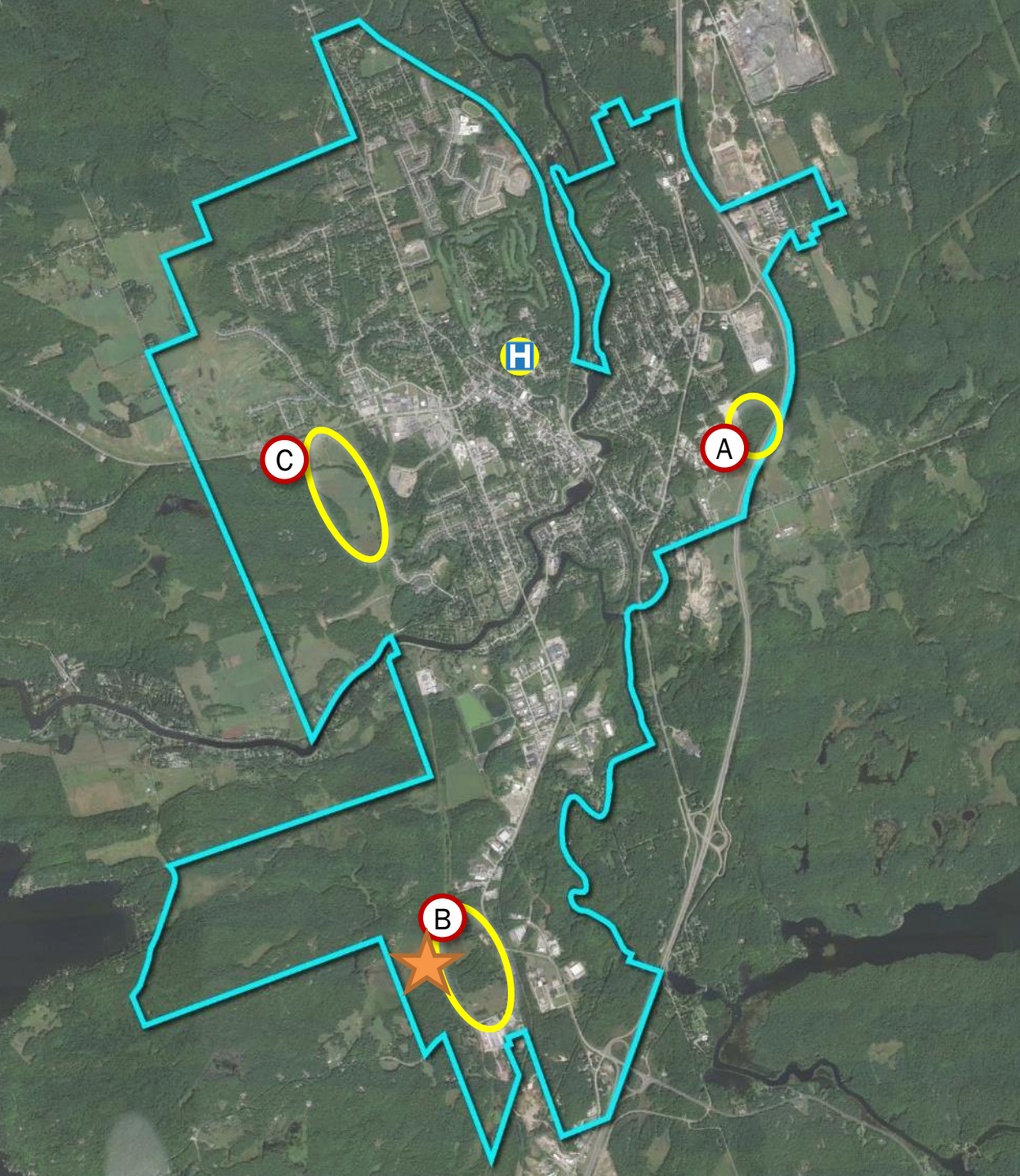
Accessible location for southern residents (i.e. Gravenhurst) and populations around lakes






Accommodating commercial/retail uses or housing for employees

Proximity to other medical services/offices (or land available to accommodate)

New hospital should embrace best sustainable practices, minimize environmental impact

Three Potential Sites



-  300 Pine Street
-  1975 Muskoka Beach Road
-  Highway 118 West lands
-  South Muskoka Memorial Hospital (existing)
-  Preferred site

A word cloud featuring various terms related to sustainability and green building. The words are arranged in a roughly circular pattern, with some overlapping. The colors used include shades of red, orange, yellow, green, and blue. The largest and most prominent words are 'timber', 'net-zero', 'sustainable', 'climate-friendly', 'carbon-neutral', and 'green'. Other visible words include 'geothermal', 'natural light', 'belonging', 'holistic', 'healing', 'cultural', 'welcoming', 'ecological', 'affordable', 'renewable', 'low emissions', and 'environment'.

geothermal
natural light
timber
belonging
net-zero
holistic
healing
cultural
sustainable
climate-friendly
carbon-neutral
welcoming
ecological
green
natural
affordable
renewable
low emissions
environment

Stage 1.3 Local Share



District & Area Municipalities

Communities are responsible for:

10% of the eligible construction costs and associated ancillary costs

100% of the costs associated with hospital equipment, furniture, land and required servicing

Working in collaboration with our communities



**Your Foundations are committed to:
inspiring our community to support the current
and future needs of your hospital.**



Get Involved!

Learn more or become involved in the exciting future of health care in Muskoka.

- Campaign Cabinet
- Campaign Planning
- Community Leadership

Leah Walker

leah.walker@mahc.ca

healthmuskoka.ca



Katherine Craine

katherine.craine@mahc.ca

huntsvillehospitalfoundation.ca



Discussion & Questions



www.surveymonkey.com/r/MAHCfeedback



Follow us @MAHCHospitals

Stay informed and subscribe for updates:

www.mahc.ca/planning-for-the-future